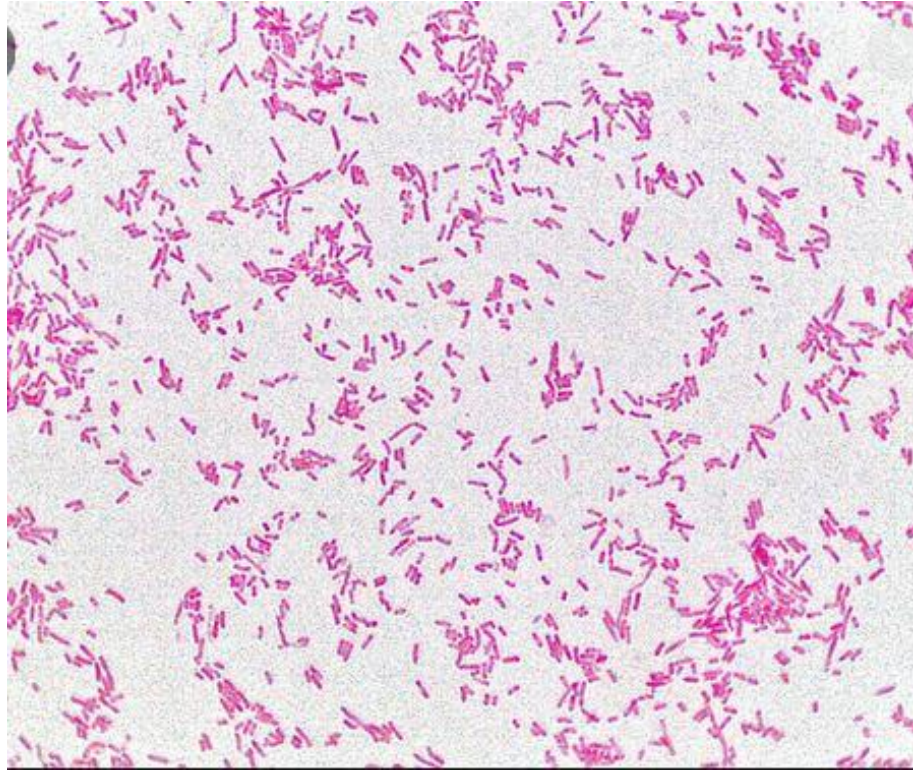


Results for Case Study

Important Notes:

- These notes are to supplement lecture activities.
- An instructor would hand these notes out once students have discussed their answers with them.
- In a lab activity, students would do the experiment and analyze their own results.

Gram stain image
(Answer: gram negative bacillus)



MacConkey

(Answer: pink colonies indicate a coliform).

Using the table of bacteria, this would narrow it down to *E. coli* and *E. aerogenes*.



Methyl red test (positive test).
This would narrow it down to E. coli



Kirby Bauer

- Hand out an image of a plate with zones of inhibition for measurement. Or provide a table with zone sizes and an interpretation table for students to use.
- This bacteria will be resistant to all antibiotics used, leading to a discussion of the CRE.